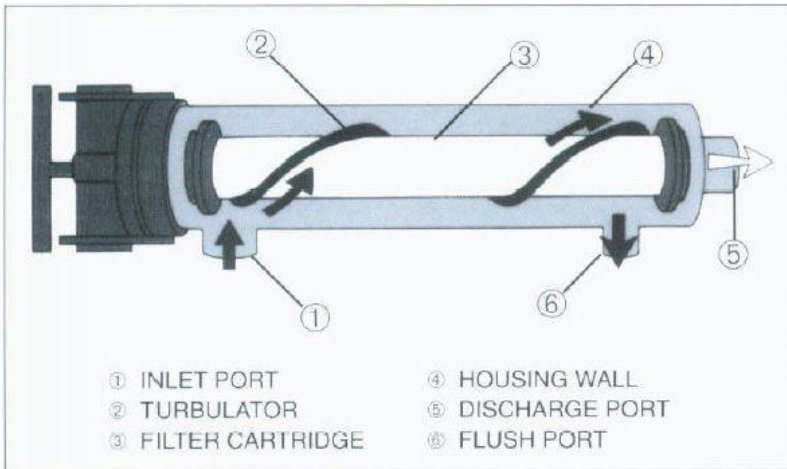


## STS Series Turbo Screen Filters

Everfilt has developed a patented TURBO SCREEN cartridge that incorporates the strength of stainless steel wedge wire technology with a unique "Turbulator" to enhance automatic screen cleaning. This advanced cartridge design is housed in an all stainless steel housing for long lasting performance.



### OPERATION

Dirty water enters the filter inlet port where it is directed by the "Turbulator" around the exterior of the filter cartridge. The particulate in the water is deposited on the exterior of the filter cartridge and out the discharge port. Screen cleaning is accomplished by opening the flush port for 2-5 seconds. The flow of turbulent water directed over the entire screen by the "Turbulator" removes the particulate

from the filter cartridge and directs it to the flush port where it is discharged from the filter.

### HOUSING

All STS series housings are constructed of corrosion resistant stainless steel with easy access closure, ribbed for collapse strength with 1/4" FPT pressure taps and stainless steel corrosion resistant flanged or grooved line connections.

### HIGH STRENGTH CARTRIDGE

The filter cartridge is an all welded single unit constructed of high strength stainless steel wedge wire. Each cartridge is engineered to withstand a "DEADHEAD" condition up to the maximum operating pressure of its corresponding housing to eliminate screen blowouts and system contamination. Available meshes are 50, 75, 100, 150, 200.





### MESH UNIFORMITY

The slot openings are fixed and welded, unlike woven materials that can flex and move.

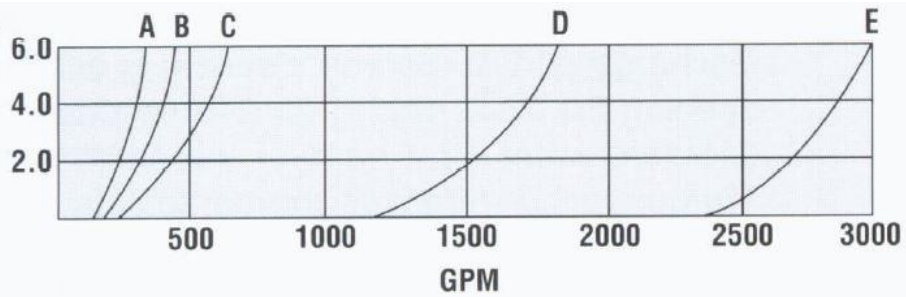
### TURBO SCREEN SYSTEMS

The speed and flexibility of the Everfilt TURBO SCREEN filter makes it an ideal building block for your filter system. It can be applied as a single unit or in multiple units. Screen cleaning is available in TURBO FLUSH or continuous by-pass modes (see LIT 111), and with manual or automatic control.

STS Series Model	GPM	Line Size In.	Max PSI	No. of Barrels	Approx. Shipping Wt. Lbs.		Flush Port Size In.	Cartridge Length In.	Housing Dia. In.
					Manual	Automatic			
STS 62-18-1	100	2	125	1	30	50	1	18	6
STS 63-24-1	175	3	125	1	38	55	1 ½	24	6
STS 62-18-2	200	4	125	2	115	–	1	18	6
STS 83-24-1	250	3	125	1	55	80	2	24	8
STS 63-24-2	350	6	125	2	–	170	2	24	6
STS 84-36-1	450	4	125	1	70	–	2	36	8
STS 83-24-2	500	6	125	2	–	220	2	24	8
STS 126F-30-1	600	6	60	1	160	–	2	30	12
STS 84-36-2	900	8	125	2	220	–	2	36	8
STS 126F-46-1	1000	6	60	1	200	–	2	46	12
STS 126F-30-2	1200	8	60	2	390	–	2	30	12
STS 148F-80-1	1800	8	60	1	300	–	3	80	14
STS 126F-46-2	2000	10	60	2	495	–	2	46	12
STS 148F-80-2	3600	14	60	2	745	–	3	80	14

\*Flow rate at 100 mesh. Consult TP116 or factory for sizing information.

**DIFFERENTIAL  
PSI\***

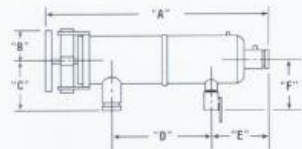


**KEY**

A = STS 62-18-1      C = STS 84-36-1      E = STS 148F-80-1  
 B = STS 63-24-1      D = STS 126F-46-1

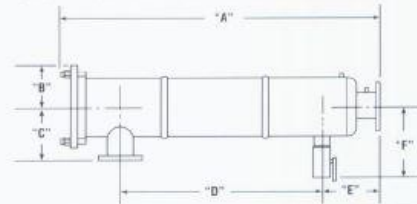
\*NOTE: Differential pressure is characteristic of filter housing and flow rate.  
 Clean screen pressure differential is negligible.

**STS 62-18-1 TO STS 84-36-1**



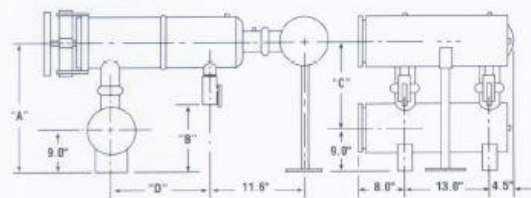
STS Model	"A"	"B"	"C"	"D"	"E"	"F"
STS 62-18-1	31.0"	5.0"	7.3"	12.0"	6.3"	6.0"
STS 63-24-1	37.0"	5.0"	7.3"	18.0"	6.3"	8.1"
STS 83-24-1	37.0"	5.3"	8.3"	18.0"	6.3"	9.6"
STS 84-36-1	49.0"	5.3"	8.3"	30.0"	6.3"	9.6"

**STS 126F-30-1 TO STS 148F-80-1**



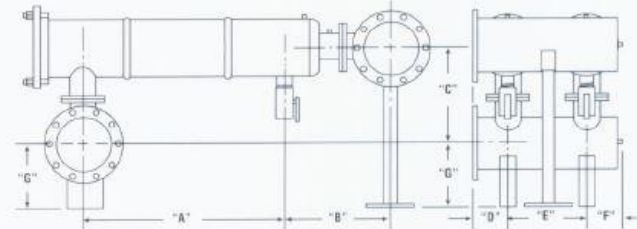
STS Model	"A"	"B"	"C"	"D"	"E"	"F"
STS 126F-30-1	40.0"	7.2"	9.5"	21.8"	6.5"	11.3"
STS 126F-46-1	55.0"	7.2"	9.5"	36.8"	6.5"	11.3"
STS 148F-80-1	91.0"	7.8"	12.0"	69.3"	8.3"	16.3"

**STS 62-18-2 TO STS 84-36-2**



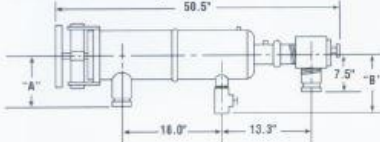
STS Model	"A"	"B"	"C"	"D"
STS 62-18-2	21.6"	11.4"	12.6"	12.0"
STS 63-24-2	21.6"	11.4"	12.6"	18.0"
STS 83-24-2	22.6"	10.4"	13.6"	18.0"
STS 84-36-2	22.6"	10.4"	13.6"	30.0"

**STS 126F-30-2 TO STS 148-80-2**



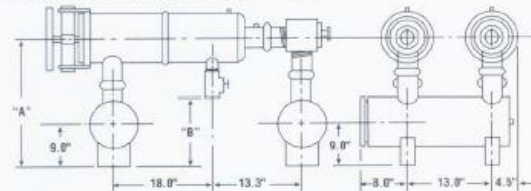
STS Model	"A"	"B"	"C"	"D"	"E"	"F"	"G"
STS 126F-30-2	21.8"	15.2"	18.2"	14.0"	20.0"	9.0"	12.0"
STS 126F-46-2	36.8"	16.2"	19.2"	14.0"	20.0"	9.0"	12.0"
STS 148F-80-2	69.3"	19.7"	23.4"	16.0"	26.0"	9.0"	16.0"

**STS 63-24-1A, STS 83-24-1A**



STS Model	"A"	"B"
STS 63-24-1A	7.3"	10.2"
STS 83-24-1A	8.3"	12.2"

**STS 63-24-2A, STS 83-24-2A**



STS Model	"A"	"B"
STS 63-24-2A	21.6"	11.4"
STS 83-24-2A	22.6"	10.4"



Everfilt  
 3167 Progress Circle  
 Mira Loma, CA 91752  
 (909) 360-8380  
 FAX (909) 360-8384

Consult your  
 Everfilt Sales Representative  
 for Price & Availability